

Nokia

4A0-C02 Exam

**Nokia SRA Composite
Questions & Answers
Demo**

Version: 9.0

Topic 1, Nokia Border Gateway Protocol

Question: 1

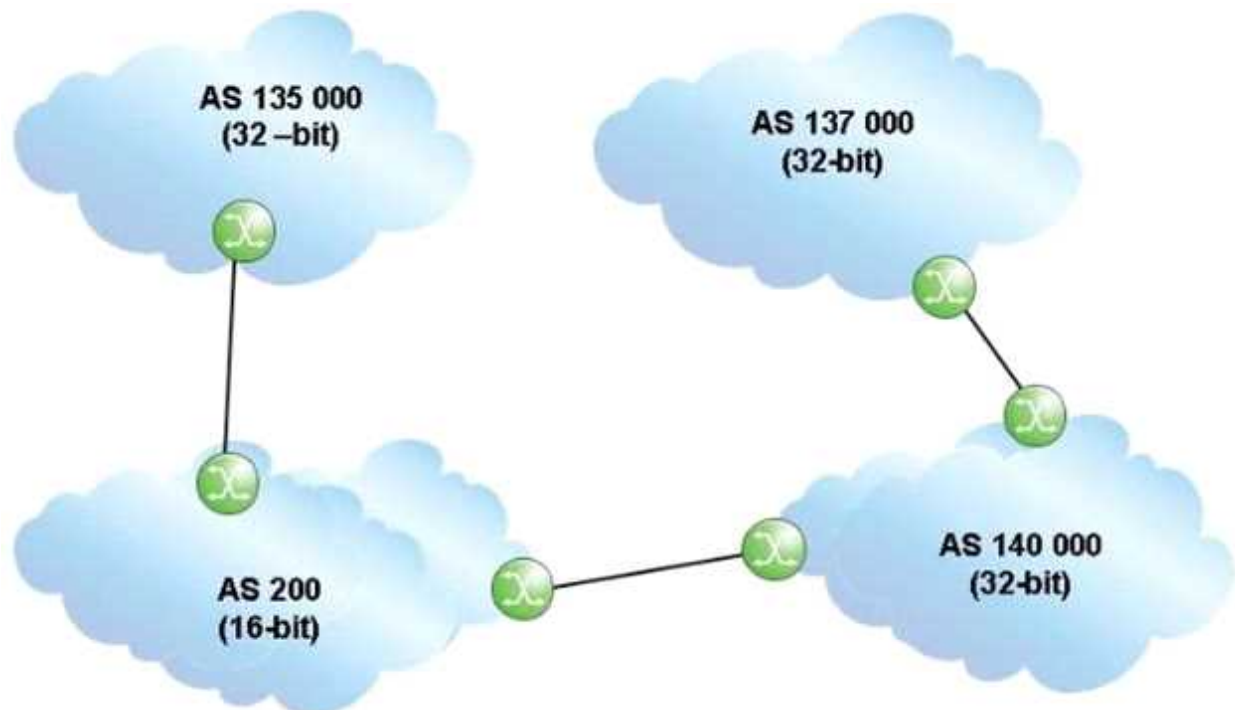
Upon the successful establishment of a TCP session between peers, what type of BGP message is exchanged?

- A. OpenSent
- B. Keepalive
- C. Open
- D. Notification
- E. Update

Answer: C

Question: 2

Click the exhibit.



An update travels from AS 135000 to AS 137000, traversing both 32-bit and 16-bit AS paths.

What will the AS Path be when the update reaches AS 137000?

- A. 140000 200 135000
- B. 137000 140000 200 135000
- C. 140000 23456 135000
- D. 135000 200 140000

Answer: A

Question: 3

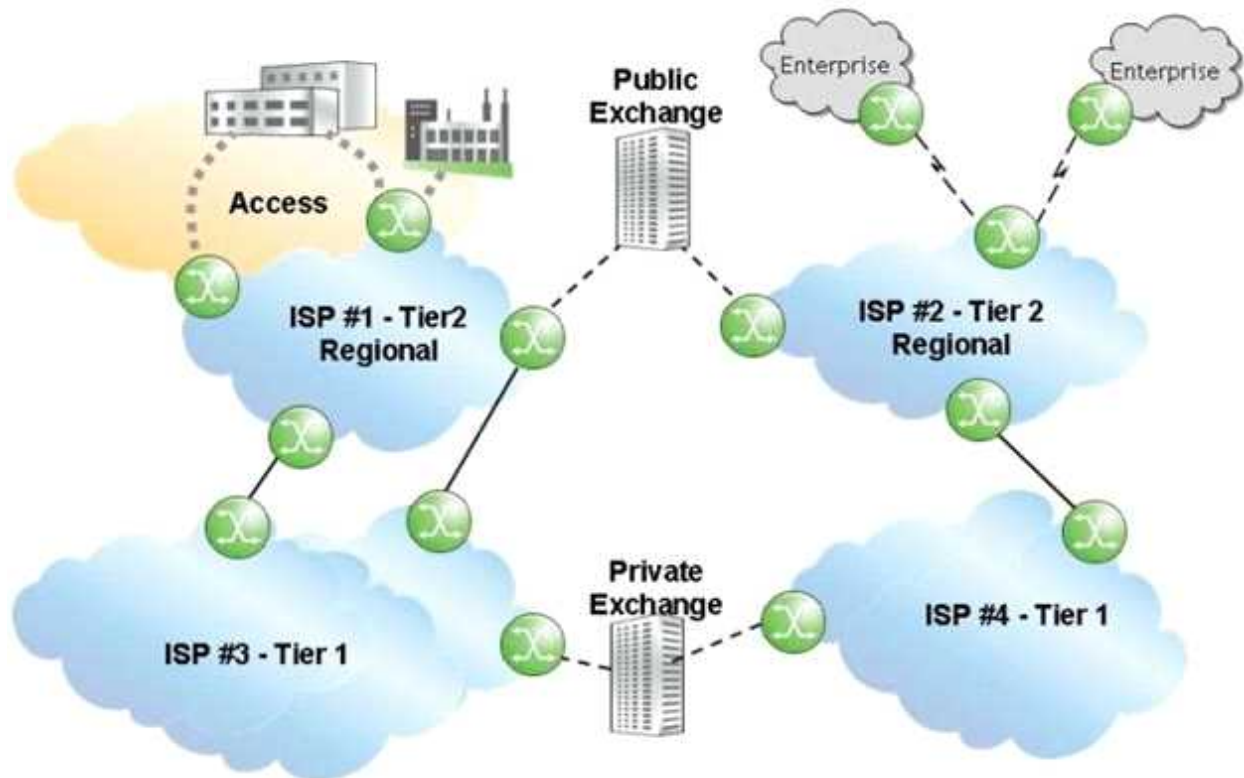
Which of the following is FALSE regarding the 16-bit public autonomous system numbers?

- A. They are allocated to the RIRs by ICANN/IANA.
- B. They are used when connecting ASs on the Internet.
- C. They range from 1 to 56319.
- D. They are assigned by the ISPs for enterprise networks.

Answer: D

Question: 4

Click the exhibit.



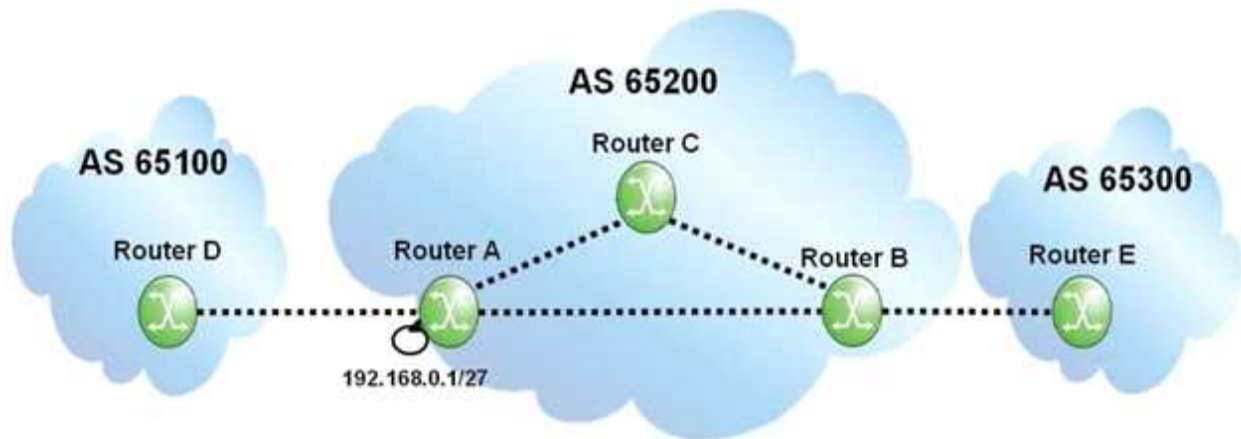
Given that ISP 1 and ISP 2 are Tier 2 providers, and that ISP 3 and ISP 4 are Tier 1 providers, what is the most likely relationship between the ISPs?

- A. ISP 1 and ISP 2 have a public transit relationship, while ISP 3 and ISP 4 have a private transit relationship.
- B. ISP 1 and ISP 2 have a private transit relationship, while ISP 3 and ISP 4 have a public transit relationship.
- C. ISP 1 and ISP 2 have a private peering relationship, while ISP 3 and ISP 4 have a public peering relationship.
- D. ISP 1 and ISP 2 have a public peering relationship, while ISP 3 and ISP 4 have a private peering relationship.

Answer: D

Question: 5

Click the exhibit.



If router A originates an update for prefix 192.168.0.1/27, what will the update contain when it reaches router B?

- A. AS Path of 65200, local-preference of 100.
- B. AS Path of 65200, local-preference of None.
- C. Null AS Path, local-preference of 100.
- D. Null AS Path, local-preference of None.

Answer: C
