

Pegasystems

PEGAPCRSA80V1_2019 Exam

**Pega Certified Robotics System Architect (PCRSA) 80V1 2019
Exam**

**Questions & Answers
Demo**

Version: 8.0

Question: 1

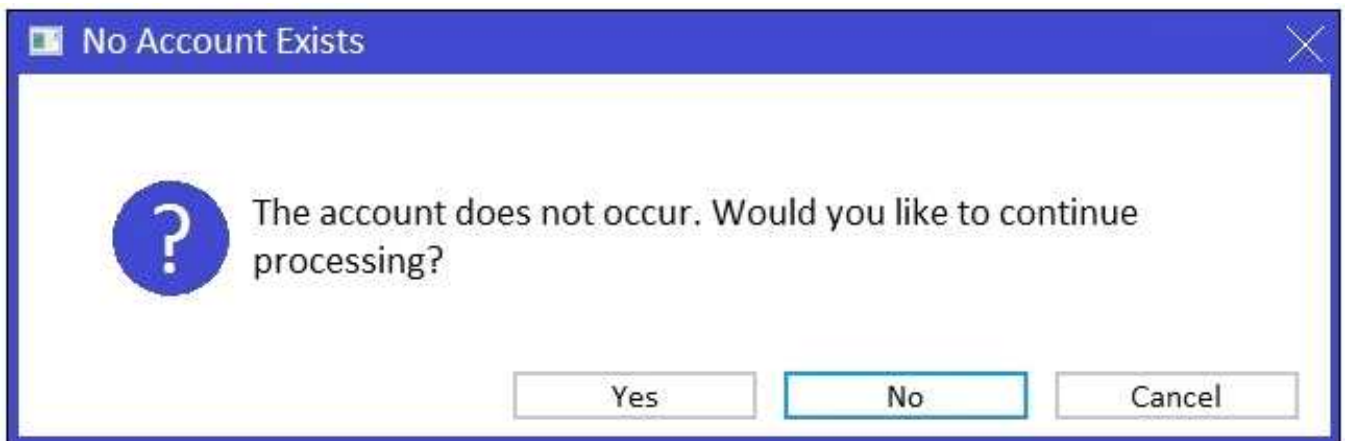
Select two statements that correctly describe adapters. (Choose two.)

- A. Adapters have accessible properties, methods, and events that launch, monitor, and expose enterprise applications for automation.
- B. An adapter allows users to integrate with an application built on a specific platform.
- C. An adapter orchestrates the deployment of a robotic solution and monitors the robots of the robot worker pool.
- D. An adapter integrates with Windows applications by using a self-hosted REST service through application JavaScript.

Answer: A,B

Question: 2

You add a MessageDialog component to an automation. Based on the following image, which option shows the configuration settings that generates the message dialog?



A

	<table border="1"> <tr><td colspan="2">Appearance</td></tr> <tr><td>Buttons</td><td>YesNoCancel</td></tr> <tr><td>Caption</td><td></td></tr> <tr><td>DefaultButton</td><td>Button2</td></tr> <tr><td>Icon</td><td>Question</td></tr> <tr><td colspan="2">Behavior</td></tr> <tr><td>TopMost</td><td>True</td></tr> <tr><td colspan="2">Data</td></tr> <tr><td>Message</td><td></td></tr> <tr><td colspan="2">Design</td></tr> <tr><td>(Name)</td><td>messageDialog2</td></tr> </table>	Appearance		Buttons	YesNoCancel	Caption		DefaultButton	Button2	Icon	Question	Behavior		TopMost	True	Data		Message		Design		(Name)	messageDialog2
Appearance																							
Buttons	YesNoCancel																						
Caption																							
DefaultButton	Button2																						
Icon	Question																						
Behavior																							
TopMost	True																						
Data																							
Message																							
Design																							
(Name)	messageDialog2																						

B

	<table border="1"> <tr><td colspan="2">Appearance</td></tr> <tr><td>Buttons</td><td>YesNoCancel</td></tr> <tr><td>Caption</td><td></td></tr> <tr><td>DefaultButton</td><td>Button2</td></tr> <tr><td>Icon</td><td>Question</td></tr> <tr><td colspan="2">Behavior</td></tr> <tr><td>TopMost</td><td>True</td></tr> <tr><td colspan="2">Data</td></tr> <tr><td>Message</td><td></td></tr> <tr><td colspan="2">Design</td></tr> <tr><td>(Name)</td><td>messageDialog2</td></tr> </table>	Appearance		Buttons	YesNoCancel	Caption		DefaultButton	Button2	Icon	Question	Behavior		TopMost	True	Data		Message		Design		(Name)	messageDialog2
Appearance																							
Buttons	YesNoCancel																						
Caption																							
DefaultButton	Button2																						
Icon	Question																						
Behavior																							
TopMost	True																						
Data																							
Message																							
Design																							
(Name)	messageDialog2																						

C

	<table border="1"> <tr><td colspan="2">Appearance</td></tr> <tr><td>Buttons</td><td>YesNoCancel</td></tr> <tr><td>Caption</td><td></td></tr> <tr><td>DefaultButton</td><td>Button2</td></tr> <tr><td>Icon</td><td>None</td></tr> <tr><td colspan="2">Behavior</td></tr> <tr><td>TopMost</td><td>True</td></tr> <tr><td colspan="2">Data</td></tr> <tr><td>Message</td><td></td></tr> <tr><td colspan="2">Design</td></tr> <tr><td>(Name)</td><td>messageDialog2</td></tr> </table>	Appearance		Buttons	YesNoCancel	Caption		DefaultButton	Button2	Icon	None	Behavior		TopMost	True	Data		Message		Design		(Name)	messageDialog2
Appearance																							
Buttons	YesNoCancel																						
Caption																							
DefaultButton	Button2																						
Icon	None																						
Behavior																							
TopMost	True																						
Data																							
Message																							
Design																							
(Name)	messageDialog2																						

D

	<table border="1"> <tr><td colspan="2">Appearance</td></tr> <tr><td>Buttons</td><td>YesNoCancel</td></tr> <tr><td>Caption</td><td></td></tr> <tr><td>DefaultButton</td><td>Button1</td></tr> <tr><td>Icon</td><td>Question</td></tr> <tr><td colspan="2">Behavior</td></tr> <tr><td>TopMost</td><td>True</td></tr> <tr><td colspan="2">Data</td></tr> <tr><td>Message</td><td></td></tr> <tr><td colspan="2">Design</td></tr> <tr><td>(Name)</td><td>messageDialog2</td></tr> </table>	Appearance		Buttons	YesNoCancel	Caption		DefaultButton	Button1	Icon	Question	Behavior		TopMost	True	Data		Message		Design		(Name)	messageDialog2
Appearance																							
Buttons	YesNoCancel																						
Caption																							
DefaultButton	Button1																						
Icon	Question																						
Behavior																							
TopMost	True																						
Data																							
Message																							
Design																							
(Name)	messageDialog2																						

A. Exhibit A

- B. Exhibit B
- C. Exhibit C
- D. Exhibit D

Answer: D

Question: 3

You are designing an automation that adds new customers to an online insurance web site. If a customer exists, a pop-up window is displayed with an error message, which closes automatically after 35 seconds.

While debugging the automation, you notice that you are receiving a control not created exception message in the Add Customer procedure after a page navigation occurs. How do you resolve the exception?

- A. Add a missing created event in the Add Customer procedure.
- B. Ensure the waitForCreate timeout is longer than 35 seconds in the Add Customer procedure.
- C. Ensure the isCreated timeout is longer than 35 seconds in the Add Customer procedure.
- D. Add a missing waitForEvent.Exists method in the Add Customer procedure.

Answer: D

Question: 4

Pega Robotic Coding Standards suggest organization of project components. You have added the `_GC_CRM` project item to the `CRMPrtj`.

Which three components are recommended to be placed in the `_GC_CRM` project item? (Choose three.)

- A. ForLoop
- B. Switch
- C. stringUtils
- D. messageDialog
- E. dateTimeUtils

Answer: C,D,E
